



सत्यमेव जयते

MINISTRY OF MICRO, SMALL & MEDIUM ENTERPRISES
GOVERNMENT OF INDIA

Brief Industrial Profile

of

District Lucknow

U.P.

Prepared by

MSME-DEVELOPMENT INSTITUTE

(Ministry of MSME, Govt.of India)

107, Industrial Estate, Kalpi Road, Fazalganj, Kanpur-208012

Phone: 0512-2295070-73, Fax: 0512-2240143

E-mail : dcdi-kanpur@dcmsmegov.in

Web- msmedikanpur.gov.in

FOREWORD

District Industrial Potential Survey Report of District Lucknow is a key report which not only contains current industrial scenario of the district but also other useful information about the district. This report provides valuable inputs which may be useful for existing & prospective entrepreneurs of the District.

It is the only readily available source which provides the latest data on infrastructure, banking and industry of the district. It also provides information on potentials areas in manufacturing and service sector of the district.

I sincerely hope that District Industrial Potential Survey Report of District Lucknow will facilitate easier dissemination of information about the district to policy makers and also to the professionals working in the MSME sector.

I appreciate the efforts made by Shri Rajesh Kumar Dy. Director (IMT) and Dr. Priyanka Singh Bhadouria, Asstt. Director (EI) in preparing the District Industrial Potential Survey Report of Lucknow District.

September, 2018
Kanpur

(U. C. Shukla)
Director

CONTENTS

S.No.	Topic	Page No.
1.	General Characteristics of the District	1
1.1	Location & Geographical Area	1-2
1.2	Topography	2
1.3	Availability of Minerals.	2
1.4	Forest	3
1.5	Administrative Set Up	3-4
2.	District at a Glance	5-7
2.1	Existing Status of Industrial Area in the District Lucknow	8
3.	Industrial Scenario of Lucknow	8
3.1	Year Wise Trend of Units Registered	8
3.2	Details of Existing Manufacturing Enterprises with 2 Digit National Industry Classification Code	9
3.3	Details of Existing Service Enterprises with 2 Digit National Industry Classification Code	10
3.4	Large Scale Industries / Public Sector undertakings	11
3.5	Major Exportable Item	11
3.6	Growth Trend	12
3.7	Vendorisation / Ancillarisation of the Industry	12
3.8	Service Enterprises	12
3.9	Potential for New MSMEs	12
3.9.1	Potentials Areas for Service Sectors	12
3.9.2	Potentials Areas for Manufacturing Sectors	12
3.10	One District One Product Scheme of Uttar Pradesh	12-13
4.	Existing Clusters of Micro & Small Enterprise	13
4.1	Detail of Major Clusters	13
4.1.1	Manufacturing Sector	13
4.1.2	Service Sector	13
4.2	Details of Identified Cluster	13-14
5.	General Issues Raised by Industry Associations During the course of Meeting	14
6	Programmes Conducted During 2017-18	14
7.	Action Plan for MSME Schemes during 2018-19	15
8.	Steps to set up MSMEs	15-16
9.	Access to Credit	16-17
10.	List of Industry Associations	17
11.	Contact Details of Officials	18

Brief Industrial Profile of Lucknow District

1. General Characteristics of the District

Lucknow is the capital of the state of Uttar Pradesh and a second largest city after Kanpur in Uttar Pradesh. This metro city is the administrative headquarters of Lucknow District and Lucknow Division. Lucknow has always been known as a multicultural city, and flourished as a cultural and artistic capital of North India in the 18th and 19th centuries.

Hindi is the city's official language. However, the most prominent language spoken in Lucknow is the Hindi-Urdu language. Though it is an ancient language, and is often referred to as Lucknawi Urdu. As the seat of the government of Uttar Pradesh, Lucknow is the site of Vidhan Sabha, the High Court and numerous government departments and agencies. It is also the location of many social and cultural institutions of national significance, such as the Kathak, Khayal, Nawabs and Classical music. It is also the birthplace of British pop star Sir Cliff Richard. With reference to health care Sanjay Gandhi Post Graduate Institute of Medical Science (SGPGI) at Rae Bareilly road has got attraction of the U.P. State. As far as with relation to tourism several historical buildings constructed by Nawab's are situated in the city and attracting the tourist.

The city's design was heavily influenced by the several emperors and incorporates significant areas of natural imperial that have earned Lucknow the title of the "city of nawab's". It is also known as the Golden City of the East, Shiraz-i-Hind and The Constantinople of India. Be it the cultural charm or the monumental one, all are well conserved here to make Lucknow. It was surpassed in population, as well as economic strength. Today it continues as an important centre of commerce, aerospace, finance pharmaceuticals, technology, design, culture, tourism, music and poetry.

1.1 Location & Geographical Area.

Lucknow, the capital of Uttar Pradesh is situated 23 Mts. above sea level. It is situated on 26° 30' - 27° 10' North latitude and 80° 30' - 81° 13' East longitude. Lucknow covers an area of 2528 km². It is surrounded on the eastern side by District Barabanki, on the western side by district Unnao, on the southern side by Raebareilly and on the northern side by Sitapur and Hardoi districts. City is located on the northwestern shore of Gomti river, which flows through the city. Some of

the tributaries of this river are Kukrail, Loni, Beta etc. Sai river flows from the south of the city and in the east enters district Raebareli. Lucknow is accessible from every part of India through Air, Rail and Road. It is directly connected with New Delhi, Patna, Calcutta, Mumbai, Varanasi, Bangalore, Thiruvananthapuram and other major cities by Amausi airport. Some Overseas cities are also directly connected from Lucknow by Air.

1.2 Topography

Awadh, known as the granary of India, was important strategically for the control of the fertile plain between the Ganges and the Yamuna rivers known as the *Doab*. Situated in the heart of the great Gangetic plain, Lucknow city is surrounded by its rural towns and villages like the orchard town of Malihabad, historic Kakori, Mohanlal ganj, Gosainganj, Chinhat, Itaunja. On its eastern side lies Barabanki District, on the western side is Unnao District, on the southern side Raebareli District, and on the northern side the Sitapur and Hardoi districts. The Gomti River, the chief geographical feature, meanders through the city, dividing it into the Trans-Gomti and Cis-Gomti regions. Lucknow city is located in the seismic zone III.

Lucknow has a warm humid subtropical climate with cool, dry winters from December to February and dry, hot summers from April to June. The rainy season is from mid-June to mid-September, when Lucknow gets an average rainfall of 469 millimeters (18.76 in) from the south-west monsoon winds, and occasionally frontal rainfall will occur in January. In winter the maximum temperature is around 25 °C (77 °F) and the minimum is in the 2 to 3 degrees Celsius range. Fog is quite common from late December to late January. Summers are extremely hot with temperatures rising to the 40 to 46 degree Celsius range.

1.3 Availability of Minerals.

PRODUCTION OF MINERAL 2016-17

S.NO.	NAME OF MINERAL	PRODUCTION in tones 2016-17
MAJOR MINERAL		
1.		
MINOR		
1.	.	
2.		
3.		NIL

SOURCE:- Directorate of Economics & Statistics, Govt. of U.P.

1.4 Forest

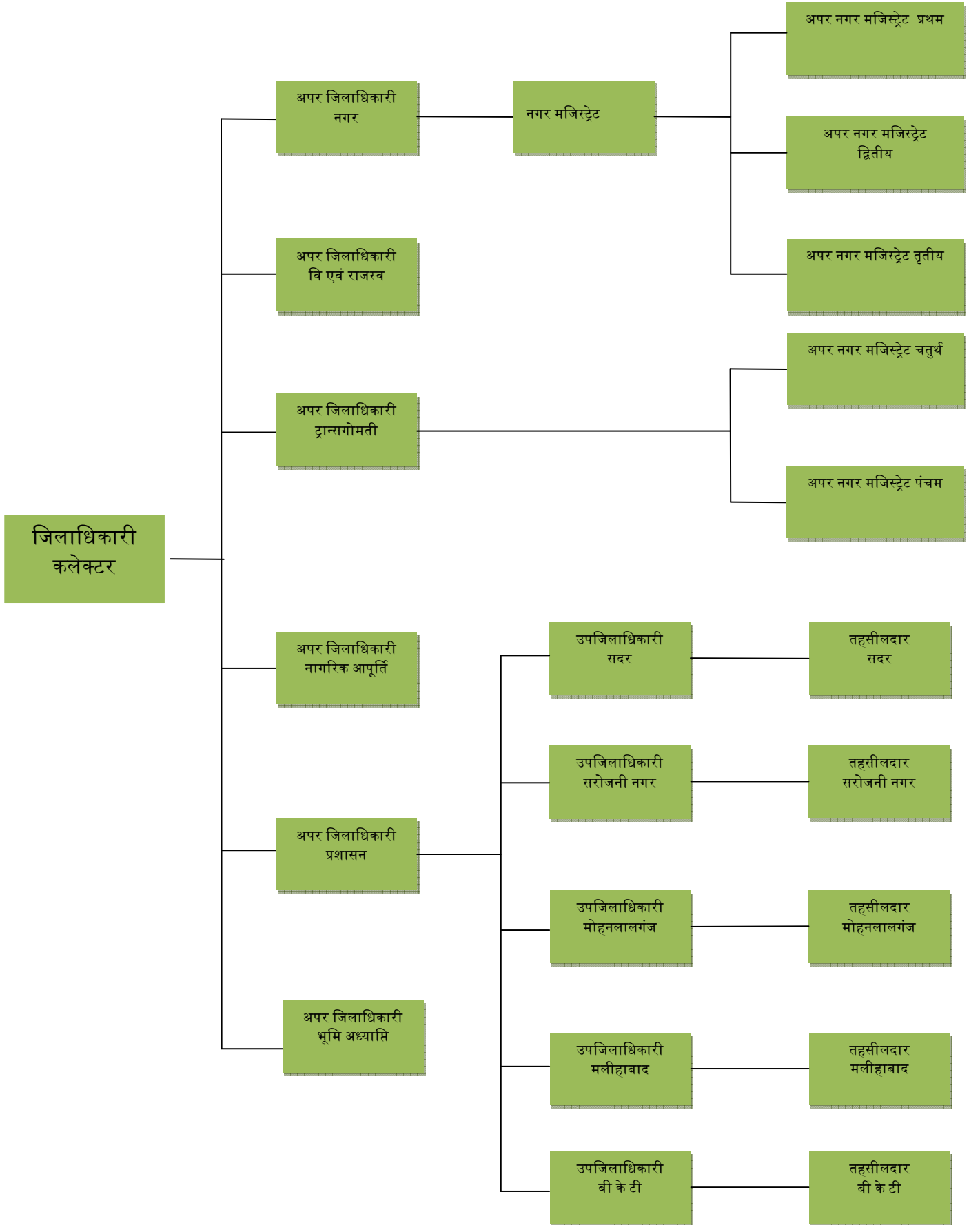
Lucknow district reports a only 12000 Hectare of area under forest. The total area under forest (4.77 percent) is much less as compared to state average which is barely around 7 percent. Shisham, Dhak, Mahua, Babul, Neem, Peepal, Ashok, Khajur, Mango and Gular trees are grown here. Different varieties of mangoes specially Dasherri are grown in Lucknow and adjacent to Malihabad district and exported to other countries too. The main crops are wheat, paddy, sugarcane, mustard, potatoes, and vegetables such as cauliflower, cabbage, tomato, brinjals are grown here. Similarly sunflowers, roses, and marigold are cultivated on quite a large area of the land. Apart from this many medicinal and herbal plants are also grown here. The City Zoological Garden is making efforts to have chinkaras from the Lucknow zoo.

1.5 Administrative Set Up

Lucknow is the political and administrative capital of Uttar Pradesh. Constituencies named Lucknow & Mohanlalganj and 9 Vidhan Sabha constituencies. The Chief Minister of the State for the 2017 Vidhan Sabha is currently Shri Yogi Adityanath.

The city is under the jurisdiction of a District Magistrate. The Collectors are in charge of property records and revenue collection for the Central Government, and oversee the national elections held in the city. The Collector is also responsible for maintaining law and order in the city. The city is administered by the Lucknow Municipal Corporation with executive power vested in the Municipal Commissioner of Lucknow, who is an administrative officer. The corporation comprises elected members (cooperators elected from the wards directly by the people) with City Mayor as its head. An Assistant Municipal Commissioner oversees each ward for administrative purposes.

The Lucknow Police is headed by an Inspector General, who is an IPS officer. The Lucknow Police comes under the state Home Ministry. The city is divided into several police zones and traffic police zones, each headed by a Deputy Inspector General of Police. The Traffic Police is a semi-autonomous body under the Lucknow Police. The Lucknow Fire Brigade department is headed by the Chief Fire Officer, who is assisted by Deputy Chief Fire Officers and Divisional Officers.



2. District at a glance

S.No.	Particular	Year	Unit	Statistics
1	Geographical Features			
	a) Geographical Data			
	(i) Latitude			26° 30' - 27° 10' North
	(ii) Longitude			80° 30' - 81° 13' East
	(iii) Geographical Area	Census 2011	Sq. Km.	2528
2.	Administrative Units			
	i) Sub Divisions	2016-17	Numbers	-
	ii) Tehsils	"	"	5
	iii) No. of Blocks	"	"	8
	iv) Panchayat Simitis	"	"	97
	v) Nagar Nigam	"	"	1
	vi) Nagar Palika/Town Area	"	"	12
	vii) Cantt Nagar Palika	"	"	1
	viii) Gram Sabha	"	"	570
	ix) Total Villages	"	"	811
	x) Inhabited (Revenue) Villages	"	"	803
	xi) Un-Inhabited Villages	"	"	8
	xii) Assembly Area	"	"	9
3.	Demographic Features			
	a) Population			
	(i) Total Male	Census 2011	Numbers	2394476
	(ii) Total Female	"	"	2195362
	(iii) Total Population	"	"	4589838
	(iv) Rural Population	"	"	1550842
	(v) Urban Population	"	"	813752
	b) Density of Population	"	Total persons per Sq. Km.	1816
	c) Sex Ratio	"	Female per Thousand Males	917
4.	Literacy			
	a) Literate			
	(i) Male	Census 2011	Numbers	1742440
	(ii) Female	"	"	1384820
	(iii) Total Persons	"	"	3127260
	b) Literacy Rate			
	(i) Male	"	Percentage	82.6
	(ii) Female	"	"	71.5
	(iii) Total Persons	"	"	77.3

S.No.	Particular	Year	Unit	Statistics
5.	Agriculture			
	a) Area	2015-16	Hectares	251596
	(i) Total Area	''	''	12000
	(ii) Forest cover	''	''	55988
	(iii) Land put to non Agriculture Use	''	''	4916
	(iv) Barren Cultivable Waste	''	''	31653
	(v) Fallow Land	''	''	6549
	(vi) Barren & Un-Cultivable Land	''	''	3077
	(vii) Pastures	''	''	2005
	(viii) Area under bush, forest & garden	''	''	135408
	(ix) Net Area Sown	''	''	67030
	(x) Area sown more than once	''	''	202438
	(xi) Gross Area sown	''	''	127243
	(xii) Net irrigated area	''	''	185742
	(xiii) Gross Irrigated area			
	b) Agricultural Production			
	(i) Food Grains	''	Metric tonnes in '000	294
	(ii) Sugarcane	''	''	13
	(iii) Oilseeds	''	''	3
	(iv) Potato	''	''	65
4.	Forest			
	(i) Forest	''	Hectares	12000
5.	Livestock & Poultry			
	a) Cattle	2012	Nos.	280140
	(i) Cows	''	''	274625
	(ii) Buffaloes			
	b) Other livestock			
	(i) Goats	''	''	182769
	(ii) Pigs	''	''	25697
	(iii) Sheeps	''	''	1878
	(iv) Other Animals	''	''	2190
	Total Livestock	''	''	767299
	c) Poultry	''	''	464834
6	Infrastructure			
	a) Railways			
	i) Length of Rail Line	2016-17	Kms.	188
	b) Roads			
	(i) National Highway	2015-16	''	0
	(ii) State Highway	''	''	57
	(iii) Major District Road	''	''	153
	(iv) Other District & Rural Roads	''	''	2888

S.No.	Particular	Year	Unit	Statistics
	(v) Under Local Body/ Zila Parishad/ Mahapalika/ Nagarpalika/ Town Area society/Cantt. Roads	2015-16	Kms.	5160
7.	Communication			
	(i) Telephone Connections	2016-17	Nos.	131616
	(ii) Post Offices	"	"	285
	(iii) Telegram Office	"	"	0
	(iv) PCO	"	"	223
8.	Public Health			
	(i) Allopathic Hospital	2016-17	Nos.	190
	(ii) Beds in Allopathic Hospitals	"	"	6481
	(iii) Ayurvedic Hospital	"	"	39
	(iv) Beds in Ayurvedic Hospitals	"	"	168
	(v) Unani Hospitals	"	"	6
	(vi) Beds in Unani Hospitals	"	"	24
	(vii) Homeopathic Hospitals	"	"	45
	(viii) Beds in Homeo Hospitals	"	"	0
	(ix) Public Health Centres	"	"	19
	(x) Primary Health Centres	"	"	84
	(xi) Family and Mother -Child Welfare Centres	"	"	45
	(xii) Family and Mother-Child Sub-Centre	"	"	315
	(xiii) Private Hospitals	"	"	123
9	Banking Commercial			
	(a) Nationalized Bank Branches	2016-17	Nos.	709
	(b) Other	"	"	132
	(c) Rural Bank Branches	"	"	38
	(d) Co-Operative Bank	"	"	23
	(d) Branches of Land Development Bank	"	"	4
10	Education			
	(i) Primary School	2016-17	Nos.	3140
	(ii) Senior Primary Schools	"	"	1277
	(iii) Intermediate Schools	"	"	839
	(iv) Colleges	"	"	55
	(v) University	"	"	12
	(vi) Engineering Colleges MBA/MCA	"	"	80
	(vii) Polytechnic	"	"	2
	(viii) ITI	"	"	5
	(ix) Medical College	"	"	10

Source: District Sankhyikiya Patrika 2016, Directorate of Economics & Statistics, Govt. of U.P.

2.1 Existing Status of Industrial Areas in the District Lucknow

S. No.	Name of Ind. Area	Land acquired (In acre)	Land developed (In acre)	Prevailing Rate Per Sqm (In Rs.)	No of Plots / Sheds	No of allotted Plots/Sheds	No of Vacant Plots/ Sheds	No. of Units in Production
1.	Rural Ind. Estate, Talkatora	48.66	48.66	3150	130/31	130/31	-	104
2.	Mohanlal Ganj	2.33	2.33	135	80	80	-	-
3.	B.T.Mishrapur	2.33	2.33	135	54	54	-	-
4.	S.P.Kakori	2.24	2.24	135	1	1	-	-
5.	UPSIDC Ind. Area, Chinhat	701.76	671.12	3800/-	146	140	06	103
6.	Sarojini Nagar	235.09	235.09	3300/-	150	150	08	93
7.	Amausi	236.90	236.90	3300/-	91	91	05	63

Source:- Directorate of Industries, Govt. of U.P. Kanpur

3. Industrial Scenario of Lucknow:

3.1 Year wise Trend of Units Registered

Sl. No.	Particulars	Year	Micro	Small	Medium	Total
1.	EM-II	2007-08	268	34	0	302
2.		2008-09	200	12	0	212
3.		2009-10	207	40	2	249
4.		2010-11	208	30	1	239
5.		2011-12	221	48	3	272
6.		2012-13	903	56	1	960
7.		2013-14	615	248	7	870
8.		2014-15	1243	202	12	1457
Total EM-II (Up to Sep 2015)			3865	670	26	4561
Total UAM (From September 2015 to 13 th September 2018)			14445	2120	104	16669

Source : <http://www.dcmsme.gov.in/publications/EMII-2014-15.pdf> / https://udyogaadhaar.gov.in/UA/Reports/DistrictBasedReport_R3.aspx

**3.2 Details of Existing Manufacturing Enterprises with 2 Digit National Industry Classification Code
As on 07.09.2018**

Sl. No.	NIC Code	Two Digit NIC Code Description	Total No. of Units across 25 Districts (Which comes under jurisdiction of MSME-DI Kanpur)	No. of Units in Lucknow
1	1	Crop and animal production, hunting and related service activities	14152	174
2	5	Mining and quarrying	256	2
3	6	Extraction of crude petroleum and natural gas	81	1
4	7	Mining of metal ores	235	12
5	8	Other mining and quarrying	1850	35
6	9	Mining support service activities	126	7
7	10	Manufacture of food products	12318	768
8	11	Manufacture of beverages	761	97
9	12	Manufacture of tobacco products	437	11
10	13	Manufacture of textiles	6219	772
11	14	Manufacture of wearing apparel	5125	1610
12	15	Manufacture of leather and related products	3018	138
13	16	Manufacture of wood and products of wood and cork, except furniture; manufacture of articles of straw and plaiting materials	1024	146
14	17	Manufacture of paper and paper products	1439	222
15	18	Printing and reproduction of recorded media	952	242
16	19	Manufacture of coke and refined petroleum products	227	11
17	20	Manufacture of chemicals and chemical products	2497	320
18	21	Manufacture of pharmaceuticals, medicinal chemical and botanical products	727	279
19	22	Manufacture of rubber and plastics products	1889	195
20	23	Manufacture of other non-metallic mineral products	997	133
21	24	Manufacture of basic metals	1061	77
22	25	Manufacture of fabricated metal products, except machinery and equipment	2415	261
23	26	Manufacture of computer, electronic and optical products	848	210
24	27	Manufacture of electrical equipment	1473	332
25	28	Manufacture of machinery and equipment n.e.c.	1100	160
26	29	Manufacture of motor vehicles, trailers and semi-trailers	288	69
27	30	Manufacture of other transport equipment	309	53
28	31	Manufacture of furniture	1375	225
29	32	Other manufacturing	5553	907
30	33	Repair and installation of machinery and equipment	1340	322
31	35	Electricity, gas, steam and air conditioning supply	472	192
32	36	Water collection, treatment and supply	376	51
33	37	Sewerage	81	22
34	38	Waste collection, treatment and disposal activities; materials recovery	129	18
35	39	Remediation activities and other waste management services	34	9
36	41	Construction of building	1260	419
37	42	Civil Engineering	1002	368
38	43	Specialized construction activities	1277	447

3.3 Details of Existing Service Enterprises with 2 Digit National Industry Classification Code As on 07.09.2018

Sl. No.	NIC Code	Two Digit NIC Code Description	Total No. of Units across 25 Districts (Which comes under jurisdiction of MSME-DI Kanpur)	No. of Units in Lucknow
1	49	Land transport and transport via pipelines	1109	244
2	50	Water transport	179	22
3	51	Air Transport	80	10
4	52	Warehousing and support activities for transportation	840	225
5	53	Postal and courier activities	284	45
6	55	Accommodation	283	71
7	56	Food and beverage service activities	5157	1212
8	58	Publishing activities	853	259
9	59	Motion picture, video and television programme production, sound recording and music publishing activities	569	132
10	60	Broadcasting and programming activities	93	21
11	61	Telecommunications	3967	522
12	62	Computer programming, consultancy and related activities	3639	959
13	63	Information service activities	1932	539
14	64	Financial service activities, except insurance and pension funding	909	248
15	65	Insurance, reinsurance and pension funding, except compulsory social security	207	44
16	66	Other financial activities	7445	193
17	68	Real estate activities	1030	526
18	69	Legal and accounting activities	499	243
19	70	Activities of head offices; management consultancy activities	271	140
20	71	Architecture and engineering activities; technical testing and analysis	496	231
21	72	Scientific research and development	69	29
22	73	Advertising and market research	590	286
23	74	Other professional, scientific and technical activities	1814	532
24	75	Veterinary activities	236	23
25	77	Rental and leasing activities	658	121
26	78	Employment activities	1143	332
27	79	Travel agency, tour operator and other reservation service activities	1873	427
28	80	Security and investigation activities	273	150
29	81	Services to buildings and landscape activities	919	277
30	82	Office administrative, office support and other business support activities	1221	440
31	84	Public administration and defence; compulsory social security	65	13
32	85	Education	3344	651
33	86	Human health activities	995	303
34	87	Residential care activities	177	54
35	88	Social work activities without accommodation	475	77
36	90	Creative, arts and entertainment activities	322	119
37	91	Libraries, archives, museums and other cultural activities	37	9
38	92	Gambling and betting activities	86	28
39	93	Sports activities and amusement and recreation activities	119	30
40	94	Activities of membership organizations	125	41
41	95	Repair of computers and personal and household goods	2228	512
42	96	Other personal service activities	12019	1357

3.4 Large Scale Industries / Public Sector undertakings

1. Hindustan Aeronautics Limited (HAL), Lucknow
2. Research Design & Standards Organisation (RDSO), Lucknow
3. National Handloom Development Corporation Limited (NHDC), U.P.
4. U.P. Drugs and Pharmaceutical Company Limited, Lucknow
5. Scooter India Limited, Lucknow
6. National Thermal Power Corporation (NTPC) Ltd, NR HQ, Lucknow
7. Bharat Sanchar Nigam Limited U.P. East
8. Tata Motors Limited Lucknow

3.5 Major Exportable Item

1. Chikan Garments
2. Automobile Components

Chikan Garments



Automobile Components / Parts



3.6 Growth Trend

Total 16,960 UAMs are filed up to 26.09.2018 in Lucknow Districts since inception, in which 35.73 % units are registered under manufacturing activity whereas 64.27 % units are registered under service activity. The data clearly shows that the service enterprises are rapidly increasing rather than manufacturing enterprises.

3.7 Vendorisation / Ancillarisation of the Industry

Total nos. of 146 MSMEs were motivated for vendorisation and ancillarisation through National Vendor Development Programme organised by this office at Kanpur and Lucknow in 2017-18.

Total nos. of 1025 MSMEs were motivated for vendorisation and ancillarisation through State Vendor Development Programme organised across 25 Districts which come under the jurisdiction of this office in 2017-18.

3.8 Service Enterprises

1. Tata Consultancy Services
2. Tata Televises Ltd.
3. Vodafone, Reliance, Airtel etc

3.9 Potential for New MSMEs

3.9.1 Potentials areas for Service Sectors

1. Information Technology
2. Electricals & Electronics Services
3. Engineering Services
4. Civil Construction Services
5. Multiplex & Malls
6. Hotel, Restaurants & allied Services.

3.9.2 Potentials areas for Manufacturing Sectors

Steel fabrication, Steel Metal Components, Food & Agro based, Handicrafts Sector (Chikankari, Zardozi, Bone Craft), Chemical Industries, Electricals, Herbal Products,

3.10 One District One Product Scheme of Uttar Pradesh

State Government has come up with One District One Product Scheme of Uttar Pradesh 2018 which will boost economic development of the state, and also encourage youth in districts to find employment avenues without migrating to bigger cities. With scheme considering only on one product per district these districts will be able to specialize in the manufacturing process of the product which will eventually increase the quality of the products and they will be able to compete on the global scale.

The district Lucknow has been notified for “**Chikankari and Zari Zardozi** ” under ODOF Scheme of Uttar Pradesh. Embroidery style is one of Lucknow’s most ancient and well-known art forms, believed to be introduced by the Mughals. The simple and precise handwork on the garment, gives it a very subtle, classy feel that modern embroidery techniques lack. The market for local Chikan is mainly in Chowk, Lucknow. The following are the important facts about Chikankari and Zari Zardozi sector of Lucknow:

1.	No. of Chikankari/ Zari Zardozi Units	30,000 Approx.
2.	Total No. of Zari Artisans	80,000 Approx.
3.	Total No. of Handicrafts Artisans	85,000 Approx.
4.	Total No. of Artisans	3.5 Lakh Approx.
5.	Total Export Per Annum	100 Crores Approx.
6.	Total Turn-over Per Annum	300 Crores Approx.
7.	Total Employment	7 Lakh Approx.
8.	Major Market for Chikankari	Chowk, Aminabad, Hazratganj, Bhootnath

Source : ODOF Report, DIEPC, Lucknow

4. Existing Clusters of Micro & Small Enterprise

4.1.1 Detail of Major Clusters

4.1.2 Manufacturing Sector

1. Lucknow Steel Furniture Cluster
2. Lucknow Chikankari Cluster
3. Terracotta Cluster
4. Plastic Industry Cluster

4.1.2 Service Sector - Nil

4.2 Details for Identified Cluster

4.2.1 Name of the cluster - Zari, Zardozi & Chikankari

1	Principal Products Manufactured in the Cluster	Zari-Zardozi Handicraft dresses & Furnishing etc.
2	Name of the SPV	Utthan Bhartiya Mahila evam Balvikas Samiti, Lucknow
3	No. of functional units in the clusters	150 units
4	Turnover of the Clusters	40 Lacs.
5	Value of Exports from the Clusters	30 Lacs
6	Employment in Cluster	700
7	Major Issues / requirement	Un-organized Sector, Marketing & Design Development Support is required.
8	Presence of capable institutions	Present
9	Thrust Areas	Marketing & Design Development
10	Problems & constraints	Completion with machine embroidery items less fund flow, Long productive, unorganized artisan cluster.

Present status of the cluster: - DSR under preparation

4.2.2 Name of the Cluster - Steel Furniture Cluster

1	Principal Products Manufactured in the Cluster	Steel Fabricated Items & Utilities Furniture
2	Name of the SPV	New SPV yet to be decided
3	No. of functional units in the clusters	NA
4	Turnover of the Clusters	NA
5	Value of Exports from the Clusters	NA
6	Employment in Cluster	NA
7	Average investment in plant & Machinery	NA
8	Major Issues	Most of the units are unorganized, Quality and consistency in quality of the products.
9	Access to Export Market	No

Present status of the cluster:-. SPV is being finalized by the State Government.

5. General issues raised by industry association during the course of meeting

- (a) Financial related problems
- (b) Non availability of Industrial plots etc.

6. Programmes conducted during 2017-18

Sl. No.	Name of the programme	No. of Programme
1.	Entrepreneurship Skill Development Programme (ESDP)	1
2.	Entrepreneurship Development Programme (EDP)	1
3.	Management Development Programme (MDP)	3
4.	Industrial Motivation Campaign (IMC)	1
5.	National Vendor Development Programme (NVDP)	1
6.	State Vendor Development Programme (SVDP)	3
7.	Awareness Programme on Zero Defect Zero Effect (ZED)	2
8.	Awareness Programme on GST	1
9.	Awareness Programme on IPR	-

7. Action plan for MSME Schemes during 2018-19

S. No.	Name of the Scheme	Proposed activity on the scheme
1	Micro & Small Enterprises - Cluster Development Programme (MSE-CDP)	
2	Zero Defect Zero Effect (ZED)	Awareness Programme
3	Credit Linked Capital Subsidy Scheme (CLCSS)	Awareness Programme
4	Lean Manufacturing	One Workshop
5	Design Clinic	Awareness Programme
6	Marketing Assistance	Units will be motivated to take the benefits of MATU Scheme.
7	Entrepreneurship Development Programme (EDP)	One Programme
8	Export Promotion	One Workshop
9	National Awards	Units will be motivated to participate in National Award 2017.
10	Digital MSME	Awareness Programme
11	Support for Entrepreneurial and Managerial. Development of SMEs through Incubators	Awareness Programme
12	Intellectual Property Rights	Awareness Programme

8. STEPS TO SET UP MSMEs :

Following are the brief description of different agencies for rendering assistance to the entrepreneurs.

Sl. No.	Type of assistance	Name and address of agencies
1.	Identification of Project Profiles, techno-economic and managerial consultancy services, market survey and economic survey report, Technical Know-how, Quality & Standard	MSME-Development Institute, 107 Industrial Estate, Kalpi Road, Kanpur-208012 Phone: EPABX: (0512) 2295070-73 Tele/Fax: (0512) 2240143 E-mail: dcmsmeknp@Gov.in Website: msmedikanpur.gov.in
2.	Land and Industrial shed	1. U.P State Industrial Development Corporation(UPSIDC) Lucknow, 2. DIEPC,Lucknow
3.	Financial Assistance	Nationalized Banks, LDM, Web Portal of Standup India Scheme, PMEGP Scheme , and MUDRA Scheme
4.	For raw materials under Govt. Supply	1.National Small Industry Corporation(NSIC) Lucknow 2.U.P State Industrial Corporation(UPSIC) Lucknow

Sl. No.	Type of assistance	Name and address of agencies
5.	Plant and Machinery	1. National Small Industry Corporation(NSIC) Lucknow 2. Private Suppliers
6.	Power/ Electricity	U.P Power Corporation Ltd., Lucknow
7.	Marketing /Export Assistance	1.MSME –Development Institute Kanpur 2. National Small Industry Corporation(NSIC) Lucknow
8.	Other Promotional Agencies	1.MSME –Development Institute Kanpur 2.National Small Industry Corporation(NSIC) Lucknow 3. Export Promotion Bureau Lucknow 4. DIEPC, Lucknow 5. Institute of Entrepreneurship Development UP, Lucknow
9.	Filing of Udyog Aadhar Memorandum (www.udyogaadhar.gov.in)	1. By the Entrepreneur himself. 2. MSME-Development Institute Kanpur, U.P. 3. District Industries & Enterprises Promotion Centre , Lucknow
10.	GeM Registration	MSME-Development Institute, Kanpur
11.	GST Registration	1. Office Of Principal Commissioner GST & Central Excise ,7A-Ashok Marg, Hazaratganj, Lucknow 2. MSME-Development Institute, Kanpur

9. Access to Credit (Year 2018-19)

9.1 Credit-Deposit Ratio (CD Ratio) of Lucknow

Financial inclusion is key to achieve rapid transformation of any district by addressing specific financial needs of people and entrepreneurs. One of the key financial indicator is the CD Ratio. The CD Ration of all Scheduled Commercial Banks & Regional Rural Banks (RRBs) of U.P. is 50.63 (As on 30.06.2018) whereas the CD Ratio of district **Lucknow is 36.94 %**.

9.2 Progress of PMEGP Scheme in Lucknow

The progress of PMEGP Scheme is as follows:

Progress of PMEGP Scheme for the Financial Year 2017-18

Forwarded to bank		Sanctioned by bank		Margin Money Claimed		Disbursement made by Nodal Branches		No. of Applications rejected by bank		Pending at banks		Pending for MM Disbursement	
No. of Projects	MM involved (In Lakhs)	No. of Projects	MM involved (In Lakhs)	No. of Projects	MM involved (In Lakhs)	No. of Projects	MM involved (In Lakhs)	No. of Projects	MM Involved (In Lakhs)	No. of Projects	MM involved (In Lakhs)	No. of Projects	MM involved (In Lakhs)
546	2123.6	184	790.38	153	639.03	115	486.53	232	795.25	133	523.15	7	20.97

Source: - KVIC, Lucknow

9.3 Progress of Stand Up India Scheme in Lucknow

Under Stand-Up India Scheme, Total 642 nos. of applications has been received under Stand Up India Scheme. Total Rs. 74.06 Crore has been disbursed since inception of the scheme in District Lucknow. The progress of the scheme is as follows:

Sectors applied for Application	No. of Application Received	No. of Application Disbursed	Amount Sanctioned (in Crore)	Amount Disbursement (in Crore)
Manufacturing	144	110	32.45	18.03
Service	263	220	49.87	33.37
Trading	235	179	41.58	22.66
Total	642	509	123.90	74.06

Source: - SIDBI, Lucknow

10. List of Industry Associations

Sl. No.	Name of Associations & Addresses	Telephone / Fax No. / Mobile / email
1.	Indian Industries Association, Lucknow Chapter, IIA Bhawan, Phase-II, Vibhuti Khand, Gomti Nagar, Lucknow-226010 Chapter Add. : DIC Bhawan, Talkatora Industrial Estate, Lucknow	Ph. 0522 272 0090 Office : 9451974738 (S.P) Chapter Off: :91-522-2661733 Email: iialkochapter@sify.com
2.	Lucknow Printers Associations, Lucknow	Email: lucknowprintersassociation@gmail.com
3.	PhD Chamber of Commerce & Industry, 1/214, Amar Shaheed Path, Vishesh Khand 1, Gomti Nagar, Lucknow, Uttar Pradesh 226010	Phone: 91-522-2728940. Fax: 91-522-2728996. E-mail: phdlucknow@phdcci.in , mithilesh@phdcci.in
4.	Associated Chambers of Commerce and Industry of Uttar Pradesh & Uttarakhand 3/90, Patrakarpuram, Vinay Khand, Gomti Nagar Lucknow 226010	Mobile : 09415034083 (Secretary General) Mobile :09936407902 (Executive Officer) E-mail: asochamup@yahoo.com Web site: asochamup.org.in
5.	Laghu Udyog Bharti Lucknow Chapter	E-mail: lubindia.awadh@gmail.com , Web Site : https://lubindia.com/

11. Contact Details of Officials

Designation	Mobile/ Phone No.	Email-ID
Commissioner	9454417503/ 0522-2629522	commluc@nic.in
District Magistrate	9415005000	dmluc@nic.in
Chief Development Officer	9454465461	cdo.lu-up@gov.in
Lead District Manager	9412626279/ 5224005967	lucknow.leadbank@bankofindia.co.in
Project Director DRDA	9454465462	pddrda.lu-up[dot]gov[dot]in
SDM Sadar	9454416490	sdmsadar.lu-up[at]gov.in
SDM Malihabad	9454416492	sdmml.d.lu-up[at]gov[dot]in
SDM Bakshi Ka Talab	9454416493	sdmbkt.lu-up[at]gov[dot]in
SDM Sarojnagar	9454416511	sdmsng.lu-up[at]gov[dot]in
SDM Mohanlalganj	9454416491	sdmmlg.lu-up[at]gov[dot]in
Tahsildar Sadar	9454416505	
Tahsildar Malihabad	9454416507	
Tahsildar Bakshi Ka Talab	9454416508	
Tahsildar Sarojnagar	9454416523	
Tahsildar Mohanlalganj	9454416506	
BDO Malihabad	9454465465	bdoml.d.lu-up[dot]gov[dot]in
BDO Mohanlalganj	9454465471	bdomlg.lu-up[dot]gov[dot]in
BDO BKT	9454465466	bdobkt.lu-up[dot]gov[dot]in
BDO Chinhat	9454465467	bdocht.lu-up[dot]gov[dot]in
BDO Kakori	9454465468	bdokak.lu-up[dot]gov[dot]in
BDO Gosaiganj	9454465470	bdogsj.lu-up[dot]gov[dot]in
BDO Mall	9454465464	bdomal.lu-up[dot]gov[dot]in
BDO Sarojni Nagar	945446569	bdosng.lu-up[at]gov[dot]in
Dy. Commissioner DIEPC, Lucknow	Ph. No. 0522- 2614083	gmdicluc@up.nic.in
